

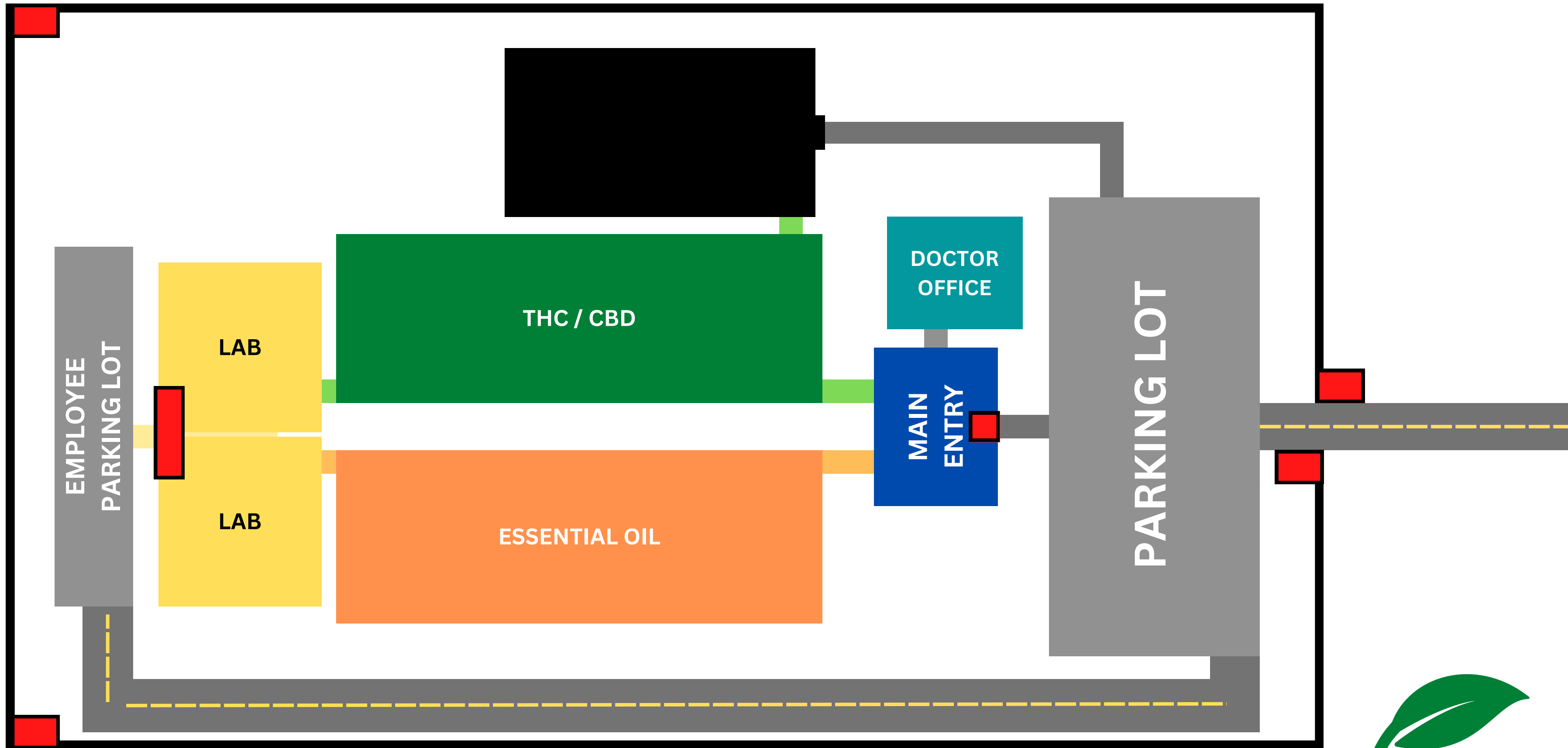
Oval/Egg, dome-like sleeping pods with features such as vibration settings, sounds (ability to link with music apps), scenery (LED screen on ceiling of pod), and aquatic therapy (fills the pod 1/3 or 1/2 with water, customer controls temperature). Pods are completely waterproof, soundproof, bulletproof and has an internal release button for customer. Sizes: Twin, Full, Queen, King. Pods digitally monitor vitals.

Pod releases THC fumes/vape and can vacuum the fumes/vape while releasing a harmless quarantine mist before exiting the pod.

\$85/hr | Open 24/7

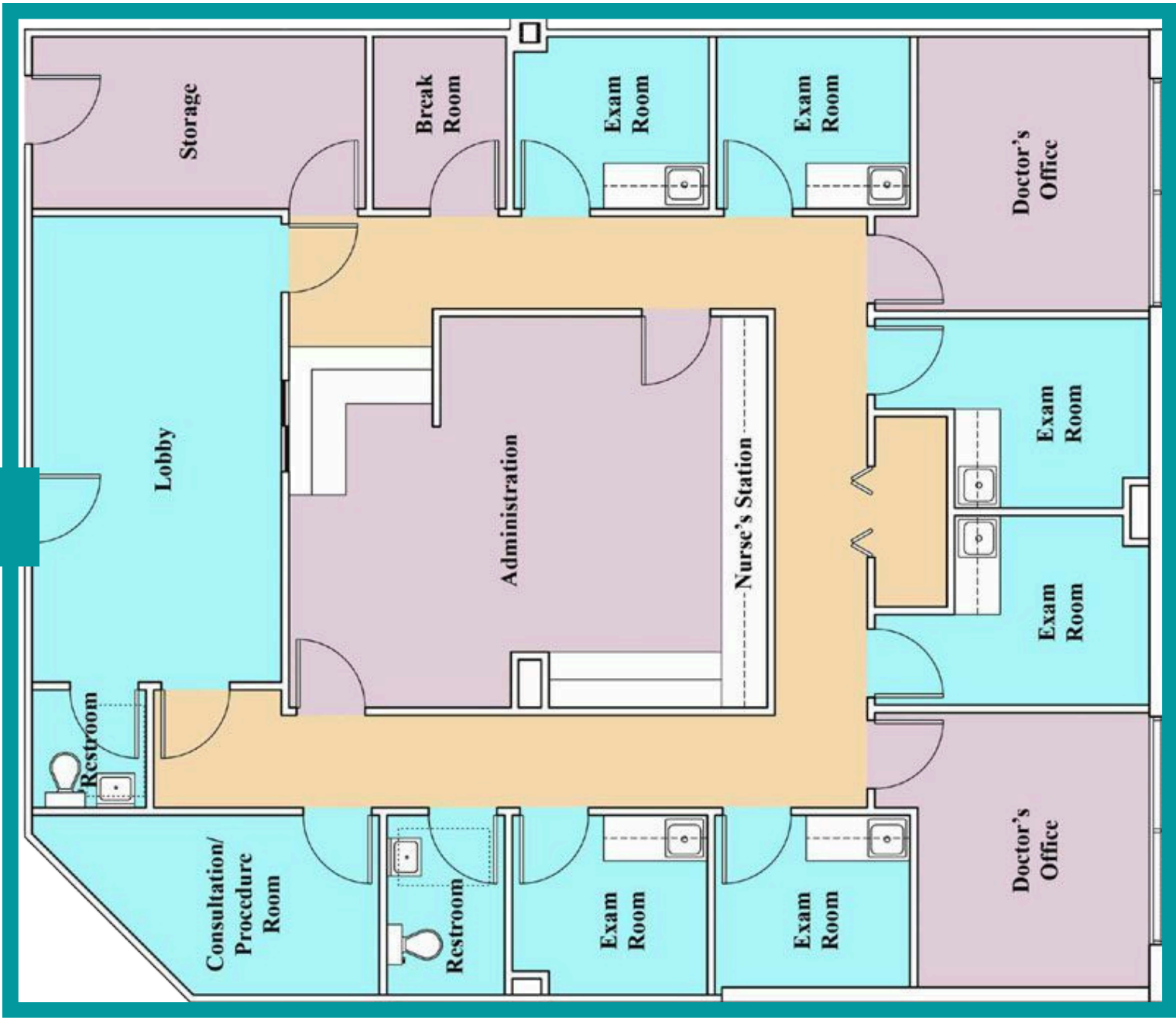
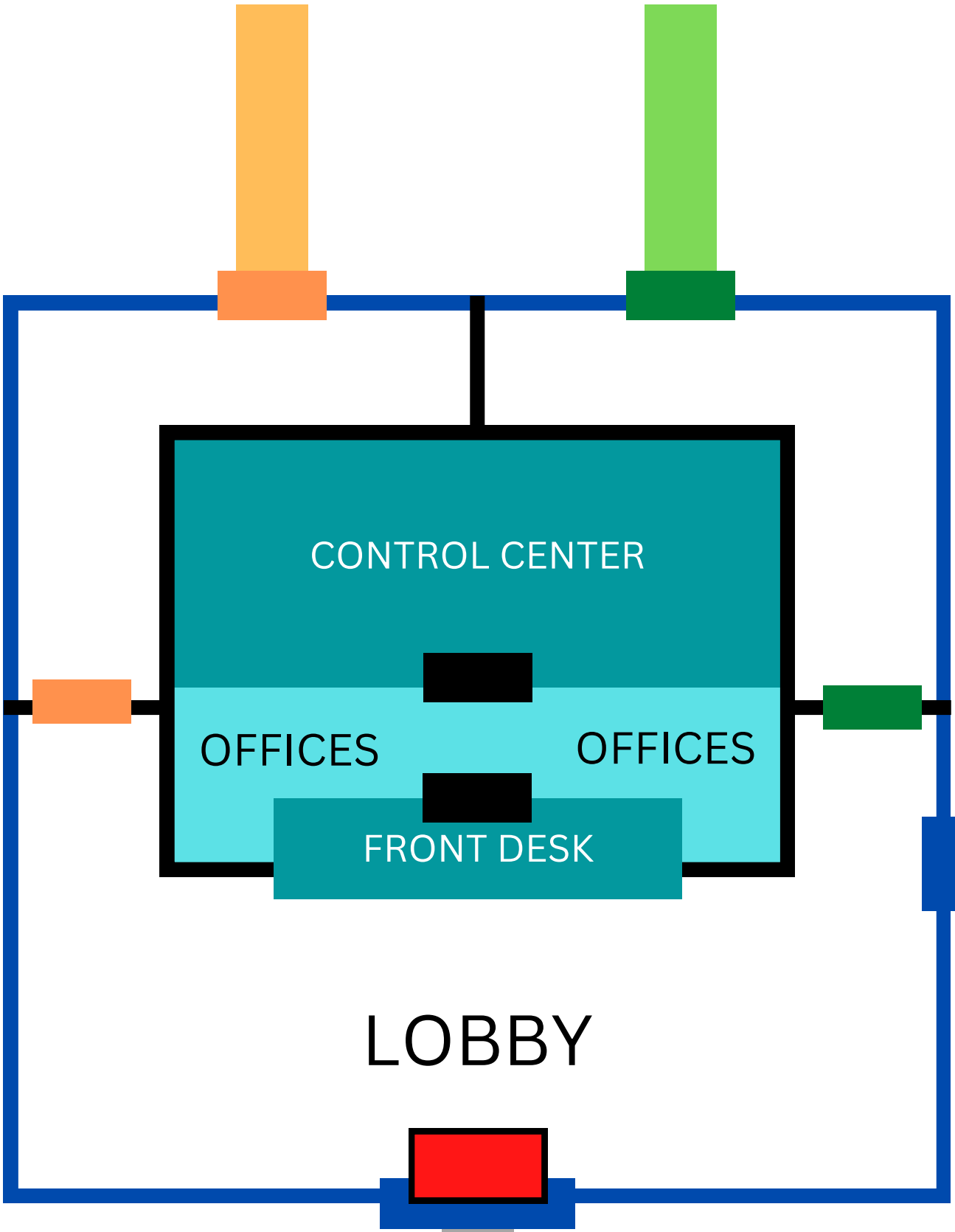
Pod releases essential oil mist and can vacuum the mist before exiting the pod.

\$45/hr | Open 24/7

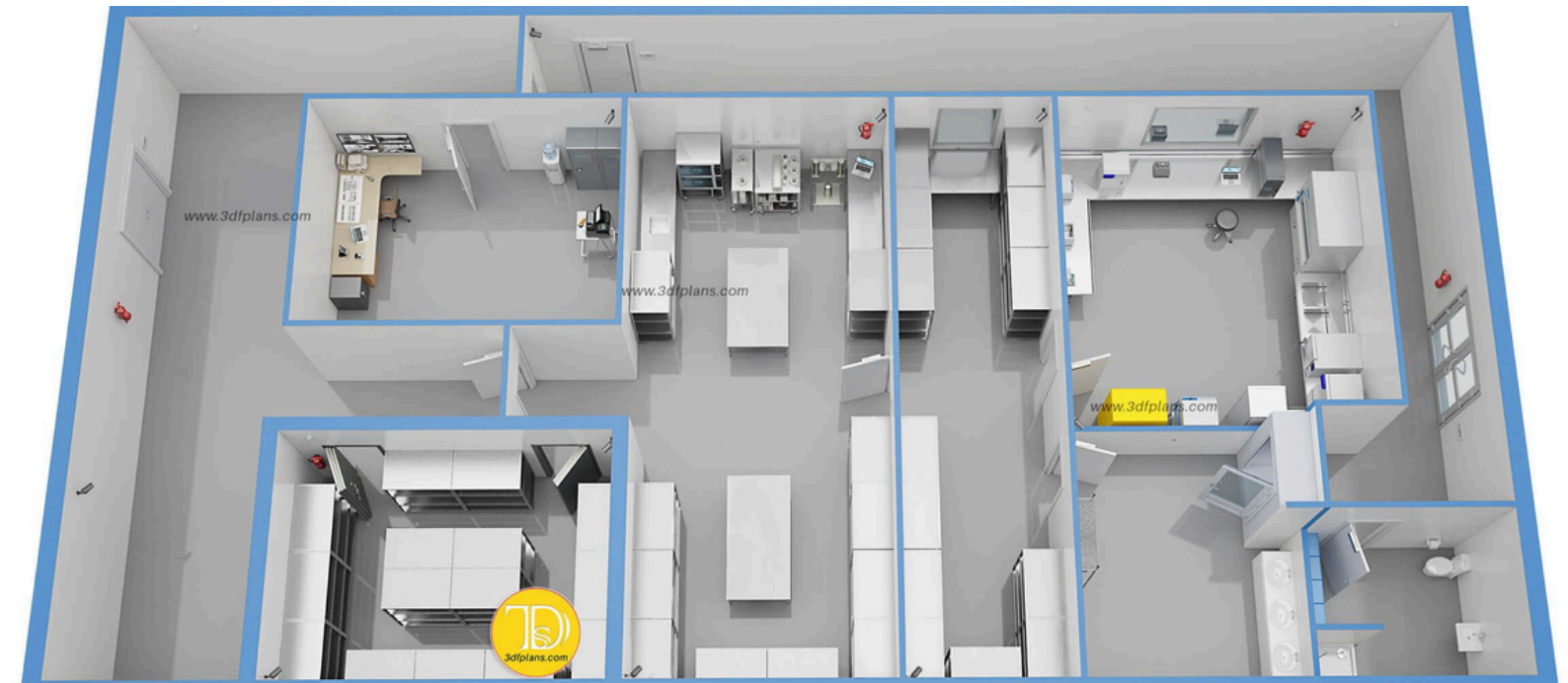
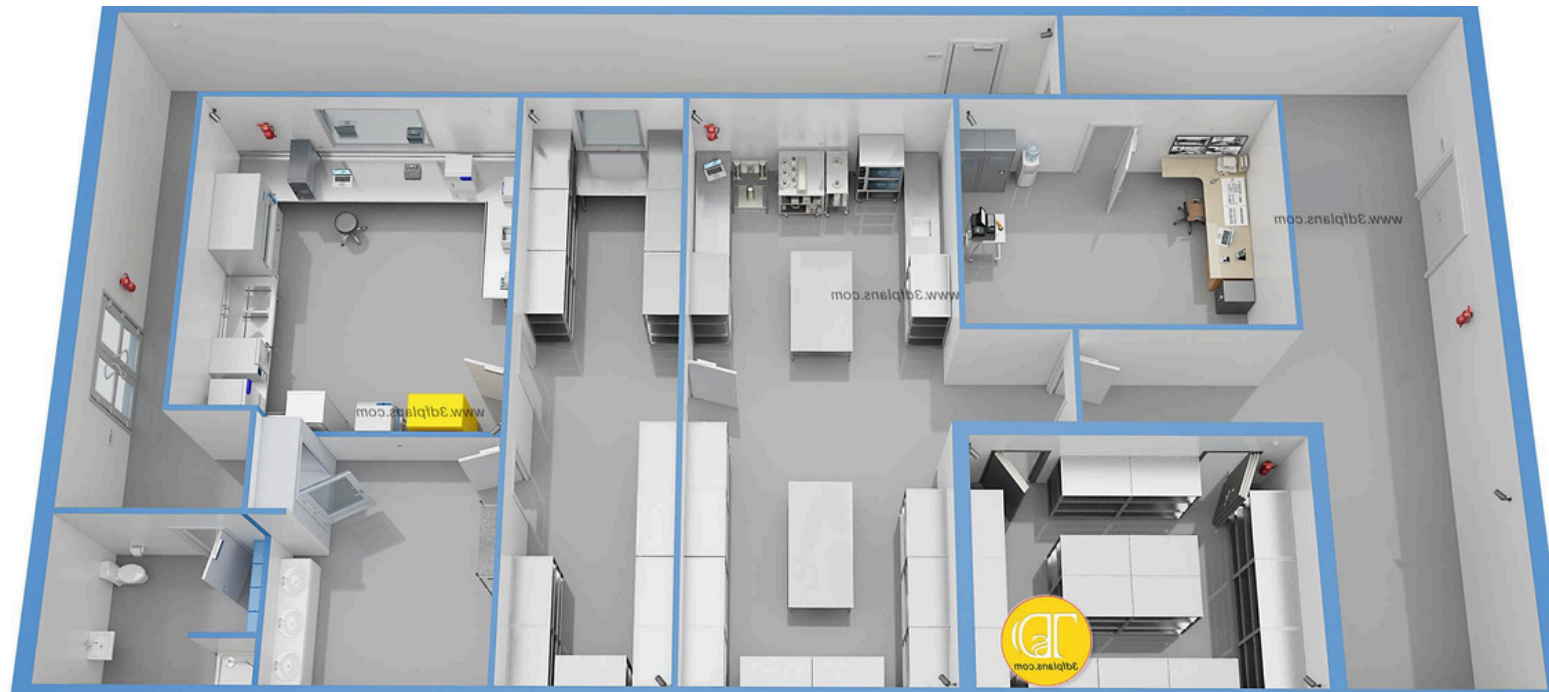


MAIN ENTRY

DOCTOR OFFICE



LAB



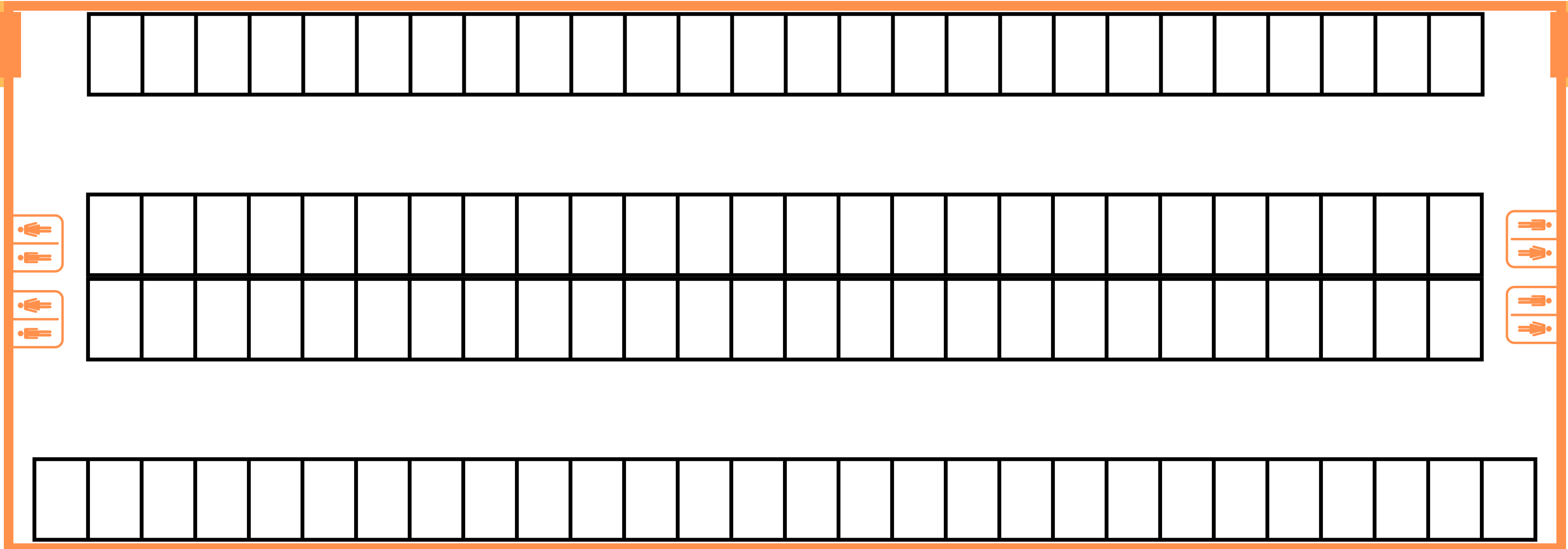
ESSENTIAL OIL

THC / CBD



ESSENTIAL OIL

$\$40/\text{hr} \times 24\text{hrs} = \$960 \times 106 \text{ units} = \$101,760 \times 365 \text{ days} = \$37,142,400/\text{yr}$



6ft

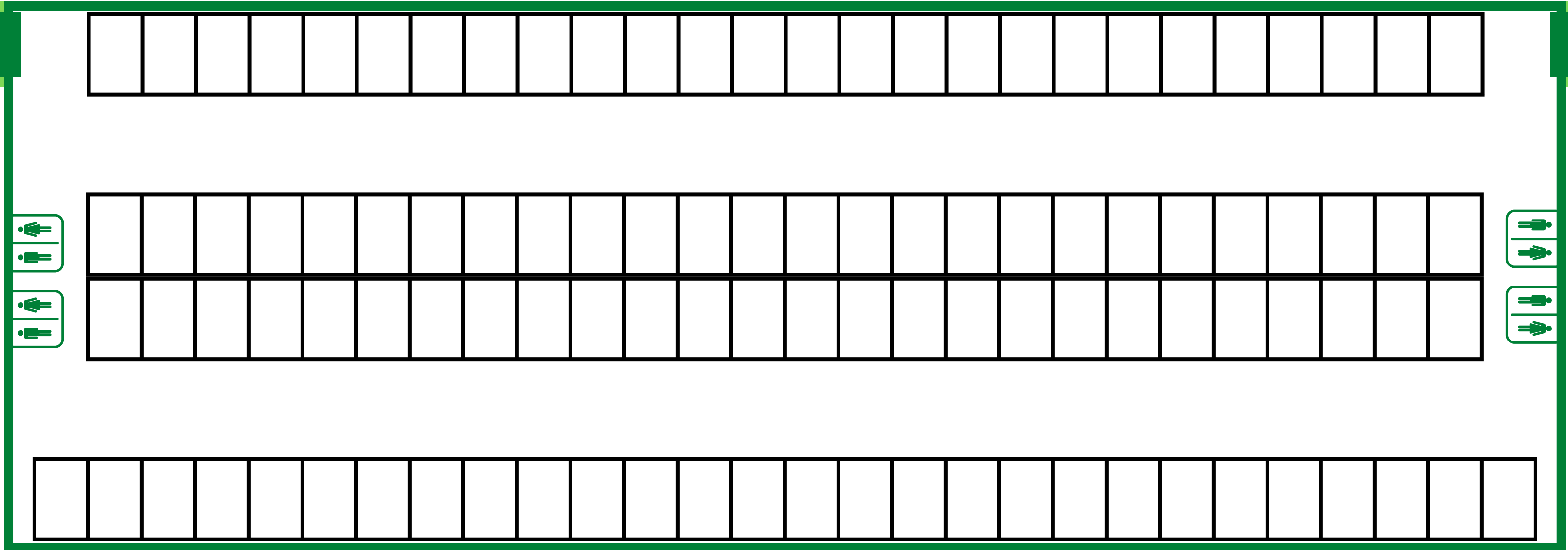


10ft



THC / CBD

$\$95/\text{hr} \times 24\text{hrs} = \$2,280 \times 106 \text{ units} = \$241,680 \times 365 \text{ days} = \$88,213,200/\text{yr}$



6ft

10ft





Each room comes with a Nebulizer machine, disposable mask and solution ready for customers.

\$100 & \$3 per mask/tube



Each room comes with a massage chair for seating while completing treatment.

\$6,000



Each room comes with a Medical Trolley Stand to place the Nebulizer on, and for any small personal items.

\$100

\$6,200 per unit x 212 units = \$1,314,400

\$3 per mask/tube x 2M pairs = \$6M

